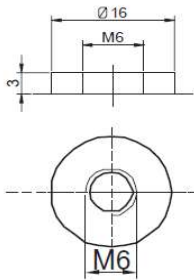
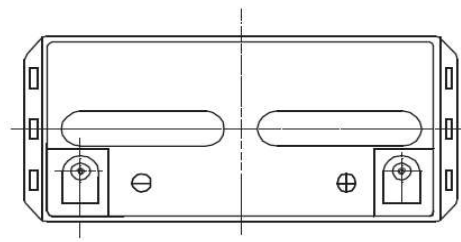
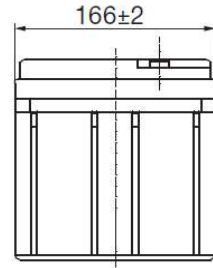
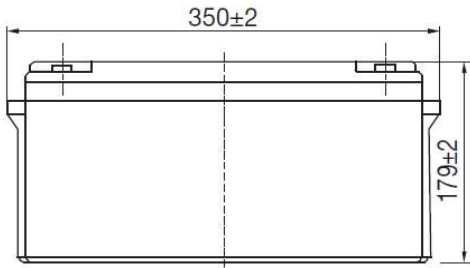


SUNLIGHT AccuForce 12V-80Ah

AGM VRLA Battery

Applications

- Uninterruptible Power Supplies (UPS)
- Electric Power Systems (EPS)
- Emergency backup power supplies
- Electronic apparatus and equipment
- Communication power supplies
- DC power supplies
- Auto control system



Specifications

Nominal Voltage	12 V	
Number of cells	6	
Design Floating Life (20°C)	10 years	
Dimensions	Length	350 mm
	Width	166 mm
	Height	179 mm
	Total Height	179 mm
Weight		23.0 kg
		23.0 kg
Nominal Capacity (25°C)	20 hours rate (1.80)	84.0 Ah
	10 hours rate (1.80)	80.0 Ah
	5 hours rate (1.75)	70.5 Ah
	1 hour rate (1.65)	50.9 Ah
Internal Resistance (fully charged, 25°C)	4.5 mOhms	
Self Discharge	approx. 3% per month at 25°C	
Nominal Operating Temperature	25°C	
Operating Temperature range	Discharge	-15°C to 45°C
	Charge	0°C to 40°C
	Storage	-15°C to 40°C
Float Charging Voltage	2.27 to 2.30 V/cell at 25°C Temperature compensation -18mV/°C	
Maximum charging current	20.0 A	
Maximum discharge current (25°C)	750 A (5 sec.)	
Short Circuit Current	1100 A	

Performance Data

Discharge Constant Current at 25°C (Amperes)

End Voltage (V/cell)	5min	10min	15min	20min	30min	45min	1h	2h	3h	4h	5h	6h	8h	10h	20h
1.60 V	294	174	137	116.8	84.0	61.7	51.6	30.2	21.4	17.4	14.4	11.6	9.94	8.48	4.40
1.65 V	284	169	134	110.0	81.9	59.2	50.9	29.4	21.3	17.3	14.3	11.5	9.83	8.37	4.35
1.70 V	272	161	128	106.0	79.4	57.9	49.5	29.1	21.1	17.2	14.2	11.4	9.77	8.29	4.31
1.75 V	262	156	124	103.0	77.5	55.8	48.6	28.7	21.0	16.9	14.1	11.4	9.70	8.15	4.26
1.80 V	246	145	118	97.5	74.6	53.5	47.0	27.9	20.2	16.6	14.0	11.0	9.40	8.00	4.20

Discharge Constant Power at 25°C (Watts/Cell)

End Voltage (V/cell)	5min	10min	15min	20min	30min	45min	1h	2h	3h	4h	5h	6h	8h	10h	20h
1.60 V	535	311	250	213	155	116	96.5	56.9	41.2	34.0	28.6	24.9	19.7	17.0	8.69
1.65 V	518	302	244	209	152	113	95.2	56.7	40.9	33.8	28.4	24.7	19.6	16.9	8.67
1.70 V	495	290	235	200	147	111	92.8	56.1	40.7	33.5	28.3	24.6	19.4	16.8	8.63
1.75 V	476	277	227	194	144	107	90.9	55.4	40.3	33.3	27.9	24.3	19.3	16.5	8.59
1.80 V	448	266	215	184	138	102	88.2	53.8	39.1	32.6	27.2	23.7	18.7	16.2	8.53

Note: The above characteristics data can be obtained within three charge/discharge cycles.

SYSTEMS SUNLIGHT S.A.

Headquarters 8, Thivaidos & Sfiggos Street | 145 64 Kifissia | Greece

Manufacturing Plant Neo Olvio | 672 00 Xanthi | Greece

Recycling Plant Industrial Area of Komotini | 691 00 Komotini | Greece

Southeast Europe Industrial Sales 14B Menexedon Street | 145 64 Kato Kifissia | Greece

Sunlight Batteries USA Inc. 4755 McConnell Center Drive | Greensboro | NC 27405 | USA

Sunlight European Battery Assembly 175, Via Stra | 37030 Colognola Ai Colli Verona | Italy

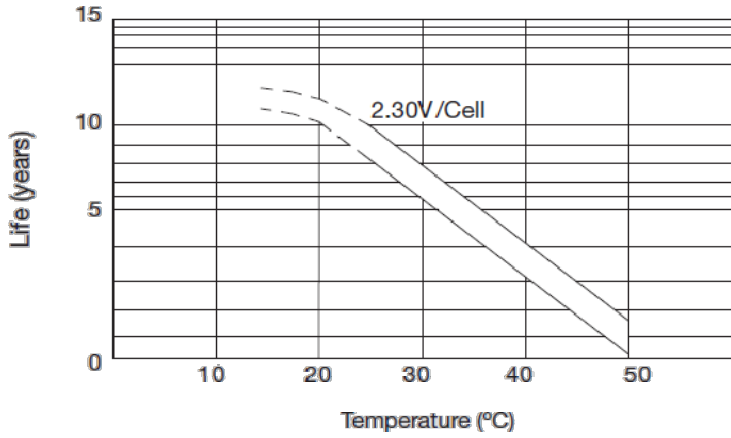
Sunlight Industrial SRL 111-115, Timisoara Boulevard | 061327 Bucharest | Romania

www.systems-sunlight.com

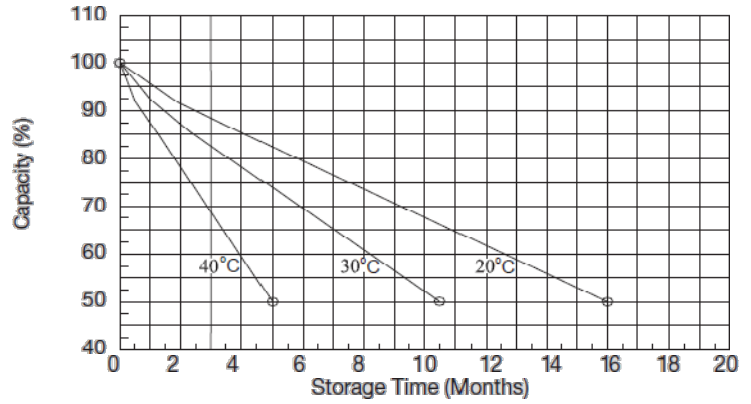
SUNLIGHT AccuForce 12V-80Ah

AGM VRLA Battery

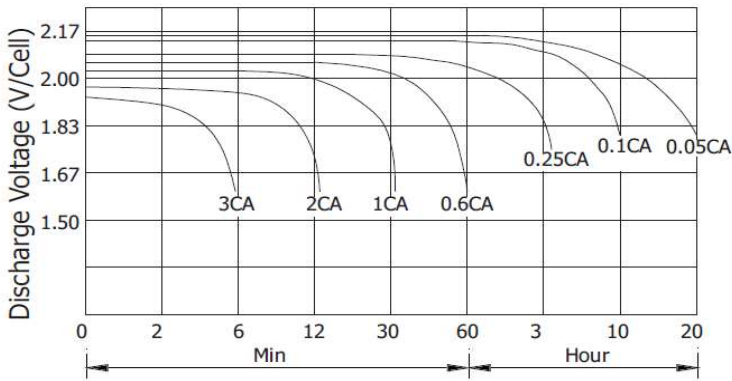
Temperature Effects on Float Life



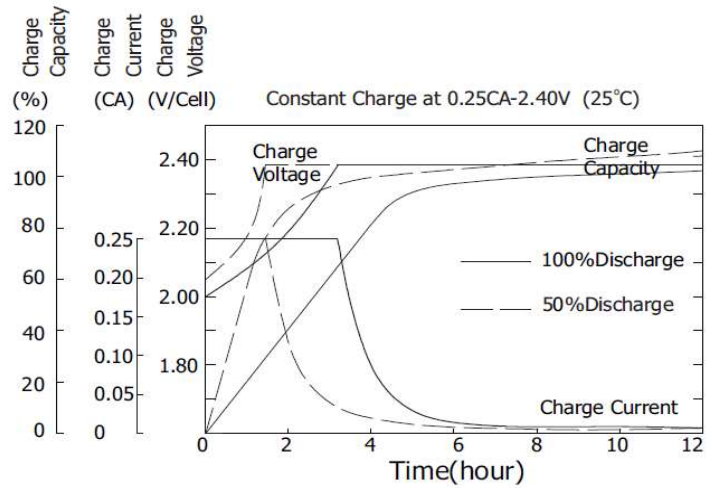
Self Discharge Characteristics



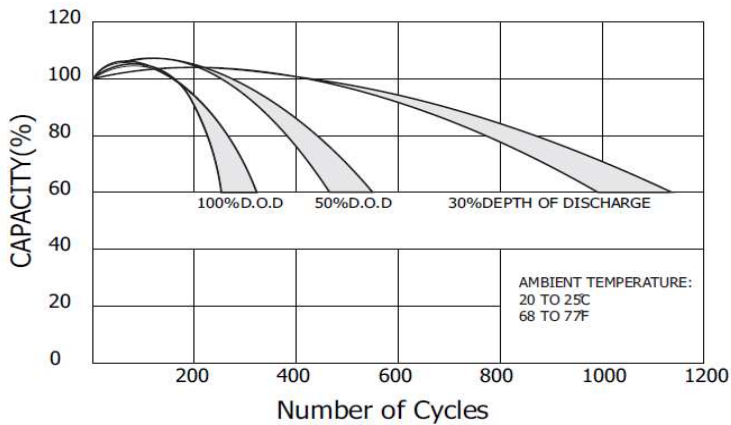
Discharge Characteristics (25°C)



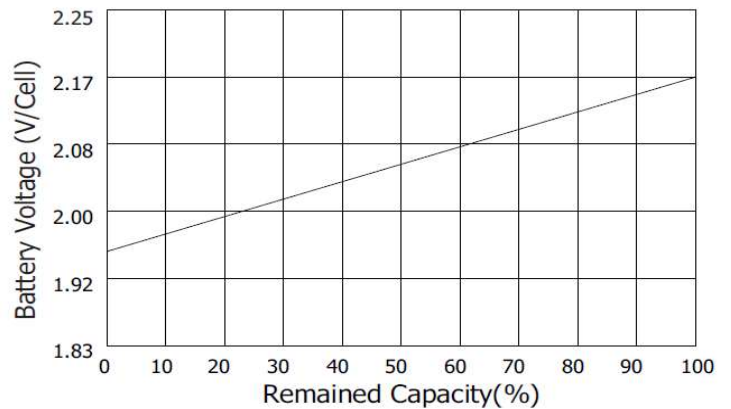
Charging Characteristics (25°C)



Cycle Service Life in Relation to Depth of Discharge



Relationship Between OCV and Residual Capacity (25°C)



SYSTEMS SUNLIGHT S.A.

Headquarters 8, Thivaidos & Sfiggos Street | 145 64 Kifissia | Greece
 Manufacturing Plant Neo Olvio | 672 00 Xanthi | Greece
 Recycling Plant Industrial Area of Komotini | 691 00 Komotini | Greece
 Southeast Europe Industrial Sales 14B Menexedon Street | 145 64 Kato Kifissia | Greece

Sunlight Batteries USA Inc. 4755 McConnell Center Drive | Greensboro | NC 27405 | USA
 Sunlight European Battery Assembly 175, Via Stra | 37030 Colognola Ai Colli Verona | Italy
 Sunlight Industrial SRL 111-115, Timisoara Boulevard | 061327 Bucharest | Romania
www.systems-sunlight.com