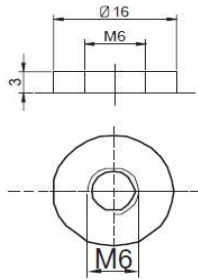
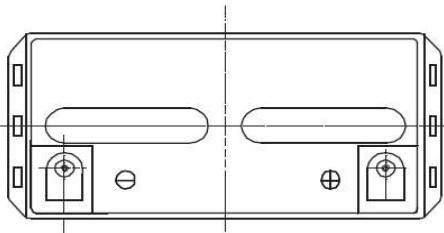
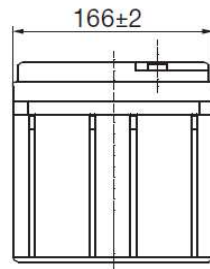
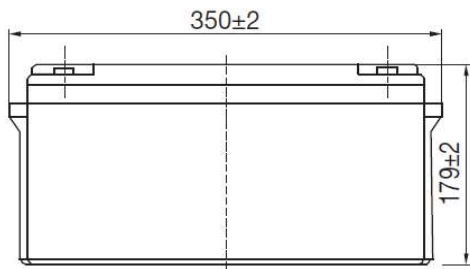


SUNLIGHT AccuForce 12V-65Ah

AGM VRLA Battery

Applications

- Uninterruptible Power Supplies (UPS)
- Electric Power Systems (EPS)
- Emergency backup power supplies
- Electronic apparatus and equipment
- Communication power supplies
- DC power supplies
- Auto control system



Specifications

Nominal Voltage	12 V	
Number of cells	6	
Design Floating Life (20°C)	10 years	
Dimensions	Length	350 mm
	Width	166 mm
	Height	179 mm
	Total Height	179 mm
Weight		20.3 kg
Nominal Capacity (25°C)	20 hours rate (1.80)	69.0 Ah
	10 hours rate (1.80)	65.0 Ah
	5 hours rate (1.75)	58.5 Ah
	1 hour rate (1.65)	40.5 Ah
Internal Resistance (fully charged, 25°C)	6.0 mOhms	
Self Discharge	approx. 3% per month at 25°C	
Nominal Operating Temperature	25°C	
Operating Temperature range	Discharge	-15°C to 45°C
	Charge	0°C to 40°C
	Storage	-15°C to 40°C
Float Charging Voltage	2.27 to 2.30 V/cell at 25°C Temperature compensation -18mV/°C	
Maximum charging current	16.25 A	
Maximum discharge current (25°C)	600 A (5 sec.)	
Short Circuit Current	780 A	

Performance Data

Discharge Constant Current at 25°C (Amperes)

End Voltage (V/cell)	5min	10min	15min	20min	30min	45min	1h	2h	3h	4h	5h	6h	8h	10h	20h
1.60 V	241	140	109.7	92.0	68.1	48.7	41.1	24.2	17.0	13.8	11.9	9.27	8.08	6.89	3.60
1.65 V	231	135	107.6	90.3	66.7	47.9	40.5	24.0	16.9	13.7	11.8	9.19	8.03	6.79	3.56
1.70 V	223	130	103.5	86.8	63.7	45.9	39.5	23.8	16.8	13.6	11.8	9.19	7.97	6.74	3.54
1.75 V	212	125	101.0	83.7	62.1	45.7	38.7	23.3	16.7	13.5	11.7	9.11	7.92	6.62	3.50
1.80 V	202	118	96.2	79.3	59.7	43.7	37.5	22.8	16.2	13.1	11.3	8.79	7.68	6.50	3.45

Discharge Constant Power at 25°C (Watts/Cell)

End Voltage (V/cell)	5min	10min	15min	20min	30min	45min	1h	2h	3h	4h	5h	6h	8h	10h	20h
1.60 V	438	255	204	174	126	93.0	78.4	46.6	33.2	27.2	23.2	20.1	16.1	13.6	7.23
1.65 V	421	248	199	169	124	91.5	77.4	46.2	33.0	27.0	23.0	19.9	16.0	13.6	7.22
1.70 V	405	238	192	164	120	87.8	75.3	45.8	32.6	26.8	22.8	19.8	15.9	13.5	7.22
1.75 V	386	227	185	158	117	87.4	73.8	45.1	32.5	26.6	22.7	19.6	15.8	13.4	7.17
1.80 V	367	216	176	150	113	83.4	71.6	44.1	31.5	25.8	22.0	19.0	15.3	13.3	7.05

Note: The above characteristics data can be obtained within three charge/discharge cycles.

SYSTEMS SUNLIGHT S.A.

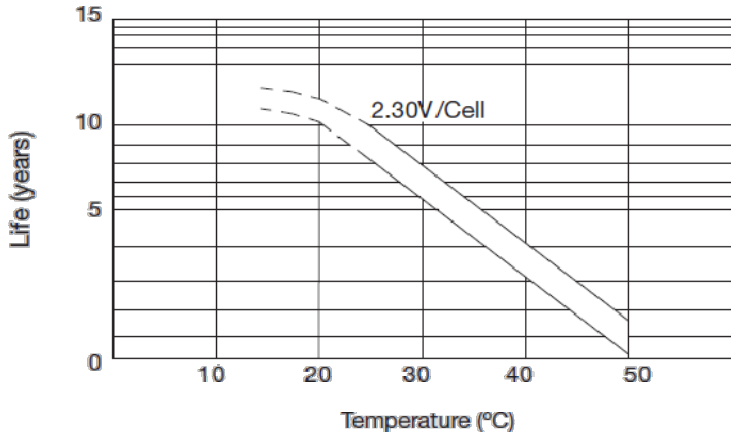
Headquarters 8, Thivaidos & Sfiggos Street | 145 64 Kifissia | Greece
 Manufacturing Plant Neo Olvio | 672 00 Xanthi | Greece
 Recycling Plant Industrial Area of Komotini | 691 00 Komotini | Greece
 Southeast Europe Industrial Sales 14B Menexedon Street | 145 64 Kato Kifissia | Greece

Sunlight Batteries USA Inc. 4755 McConnell Center Drive | Greensboro | NC 27405 | USA
 Sunlight European Battery Assembly 175, Via Stra | 37030 Colognola Ai Colli Verona | Italy
 Sunlight Industrial SRL 111-115, Timisoara Boulevard | 061327 Bucharest | Romania
www.systems-sunlight.com

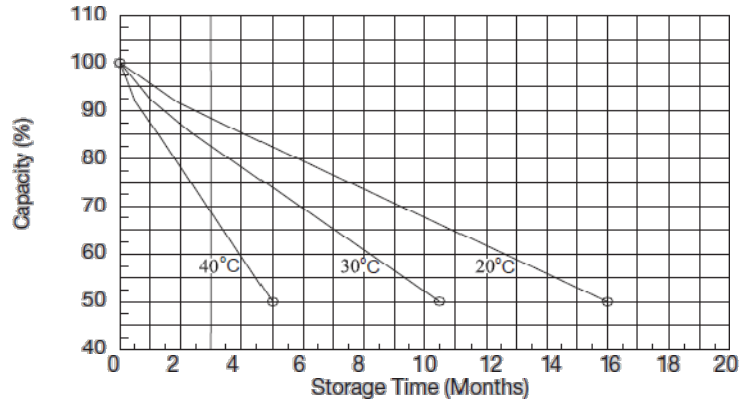
SUNLIGHT AccuForce 12V-65Ah

AGM VRLA Battery

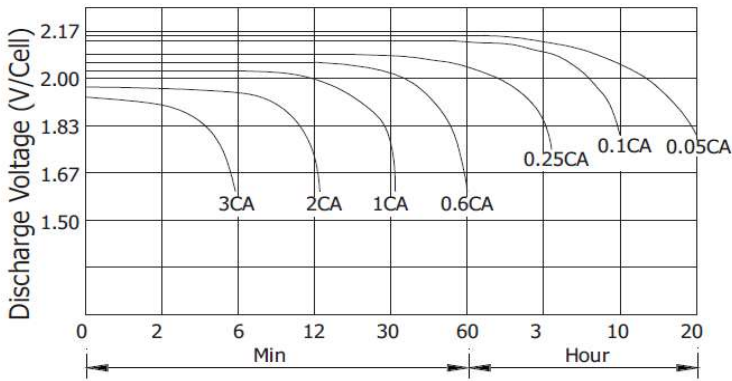
Temperature Effects on Float Life



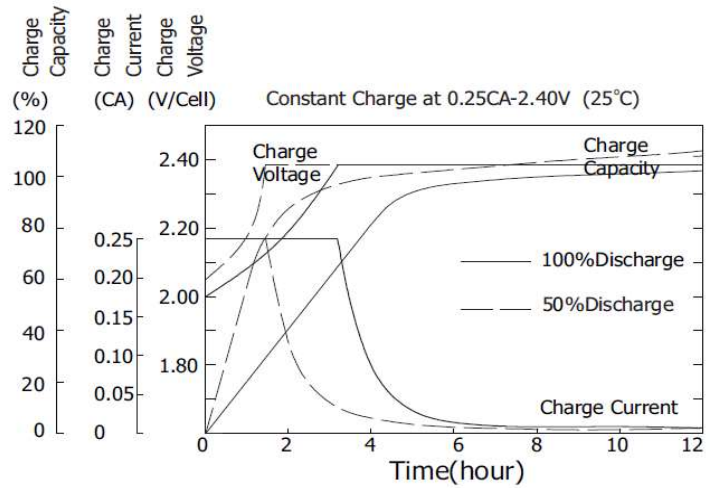
Self Discharge Characteristics



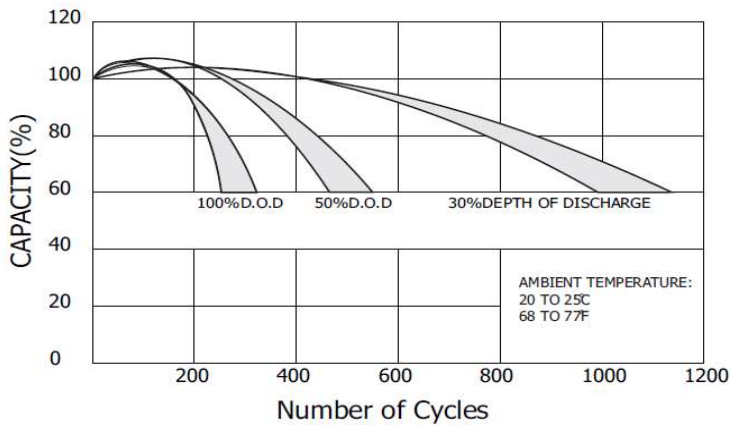
Discharge Characteristics (25°C)



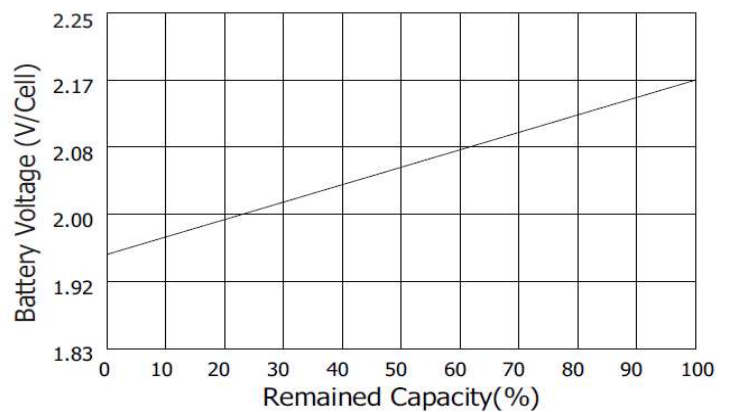
Charging Characteristics (25°C)



Cycle Service Life in Relation to Depth of Discharge



Relationship Between OCV and Residual Capacity (25°C)



SYSTEMS SUNLIGHT S.A.

Headquarters 8, Thivaidos & Sfiggos Street | 145 64 Kifissia | Greece
 Manufacturing Plant Neo Olvio | 672 00 Xanthi | Greece
 Recycling Plant Industrial Area of Komotini | 691 00 Komotini | Greece
 Southeast Europe Industrial Sales 14B Menexedon Street | 145 64 Kato Kifissia | Greece

Sunlight Batteries USA Inc. 4755 McConnell Center Drive | Greensboro | NC 27405 | USA
 Sunlight European Battery Assembly 175, Via Stra | 37030 Colognola Ai Colli Verona | Italy
 Sunlight Industrial SRL 111-115, Timisoara Boulevard | 061327 Bucharest | Romania
www.systems-sunlight.com