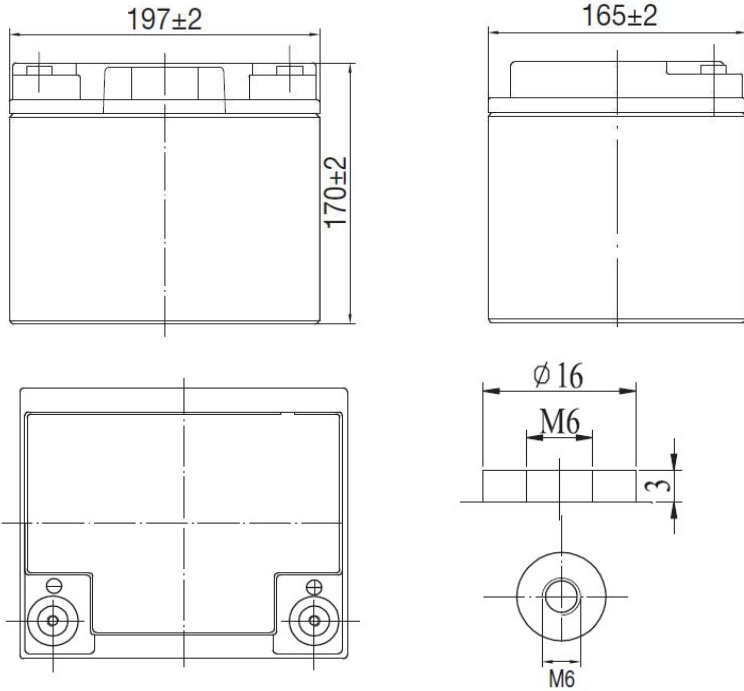


SUNLIGHT AccuForce 12V-40Ah

AGM VRLA Battery

Applications

- Uninterruptible Power Supplies (UPS)
- Electric Power Systems (EPS)
- Emergency backup power supplies
- Electronic apparatus and equipment
- Communication power supplies
- DC power supplies
- Auto control system



Specifications

Nominal Voltage	12 V	
Number of cells	6	
Design Floating Life (20°C)	10 years	
Dimensions	Length	197 mm
	Width	165 mm
	Height	170 mm
	Total Height	170 mm
Weight		12.5 kg
Nominal Capacity (25°C)	20 hours rate (1.80)	42.0 Ah
	10 hours rate (1.80)	40.0 Ah
	5 hours rate (1.75)	35.7 Ah
	1 hour rate (1.65)	25.0 Ah
Internal Resistance (fully charged, 25°C)	10.2 mOhms	
Self Discharge	approx. 3% per month at 25°C	
Nominal Operating Temperature	25°C	
Operating Temperature range	Discharge	-15°C to 45°C
	Charge	0°C to 40°C
	Storage	-15°C to 40°C
Float Charging Voltage		2.27 to 2.30 V/cell at 25°C
		Temperature compensation -18mV/°C
Maximum charging current	10.0 A	
Maximum discharge current (25°C)	400 A (5 sec.)	
Short Circuit Current	600 A	

Performance Data

Discharge Constant Current at 25°C (Amperes)

End Voltage (V/cell)	5min	10min	15min	20min	30min	45min	1h	2h	3h	4h	5h	6h	8h	10h	20h
1.60 V	149	86.1	67.6	57.3	42.0	30.2	26.0	14.8	10.69	8.49	7.25	5.85	4.97	4.24	2.24
1.65 V	144	83.5	66.0	55.9	40.2	29.8	25.0	14.7	10.44	8.43	7.21	5.68	4.94	4.19	2.22
1.70 V	138	80.4	63.5	53.8	38.9	28.5	24.4	14.6	10.36	8.38	7.16	5.64	4.90	4.15	2.20
1.75 V	132	75.3	62.0	52.0	38.0	28.4	23.9	14.4	10.24	8.32	7.14	5.59	4.87	4.07	2.15
1.80 V	125	71.4	59.2	49.3	36.6	27.1	23.1	14.0	9.94	8.07	6.89	5.43	4.73	4.00	2.10

Discharge Constant Power at 25°C (Watts/Cell)

End Voltage (V/cell)	5min	10min	15min	20min	30min	45min	1h	2h	3h	4h	5h	6h	8h	10h	20h
1.60 V	271	158	124	105.4	77.1	57.8	48.3	28.6	20.4	16.7	14.6	12.7	9.90	8.34	4.48
1.65 V	263	150	121	102.8	75.5	56.9	47.4	28.4	20.2	16.6	14.5	12.7	9.84	8.33	4.42
1.70 V	252	142	117	99.0	73.1	54.5	46.3	28.2	20.1	16.5	14.4	12.6	9.76	8.31	4.38
1.75 V	241	136	113	95.7	71.4	54.3	45.4	27.8	20.1	16.4	14.3	12.5	9.70	8.27	4.28
1.80 V	228	129	107	90.6	68.8	51.9	44.0	27.0	19.4	15.9	13.9	12.1	9.41	8.20	4.23

Note: The above characteristics data can be obtained within three charge/discharge cycles.

SYSTEMS SUNLIGHT S.A.

Headquarters 8, Thivaídos & Sfiggós Street | 145 64 Kifissia | Greece

Manufacturing Plant Neo Olvio | 672 00 Xanthi | Greece

Recycling Plant Industrial Area of Komotini | 691 00 Komotini | Greece

Southeast Europe Industrial Sales 14B Menexedon Street | 145 64 Kato Kifissia | Greece

Sunlight Batteries USA Inc. 4755 McConnell Center Drive | Greensboro | NC 27405 | USA

Sunlight European Battery Assembly 175, Via Stra | 37030 Colognola Ai Colli Verona | Italy

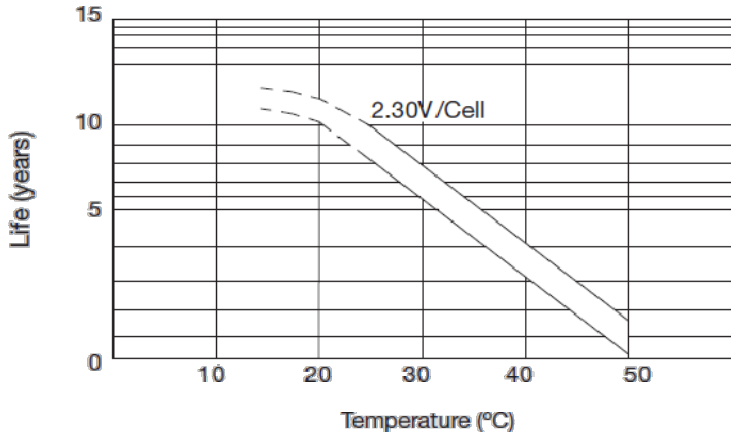
Sunlight Industrial SRL 111-115, Timisoara Boulevard | 061327 Bucharest | Romania

www.systems-sunlight.com

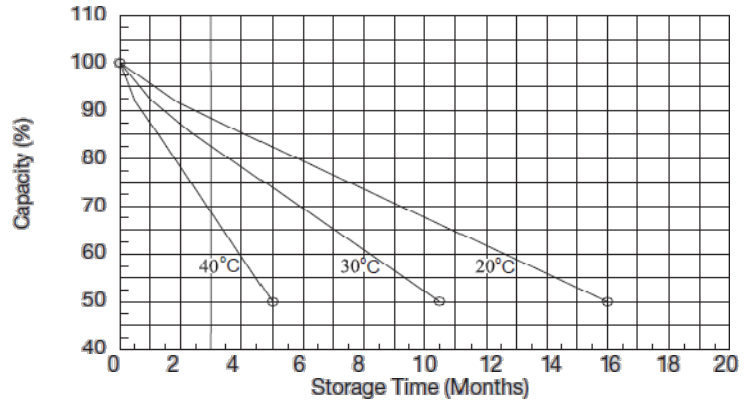
SUNLIGHT AccuForce 12V-40Ah

AGM VRLA Battery

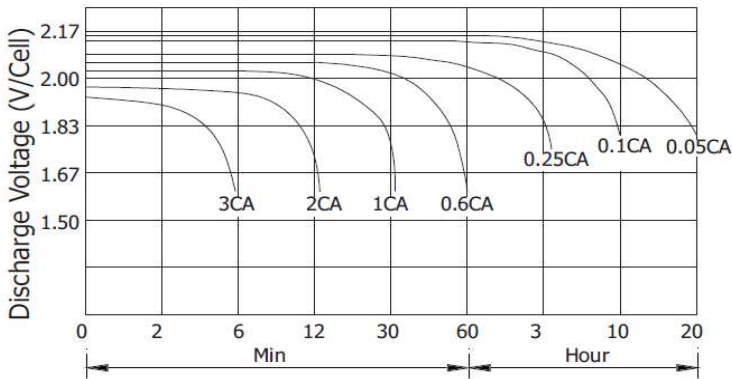
Temperature Effects on Float Life



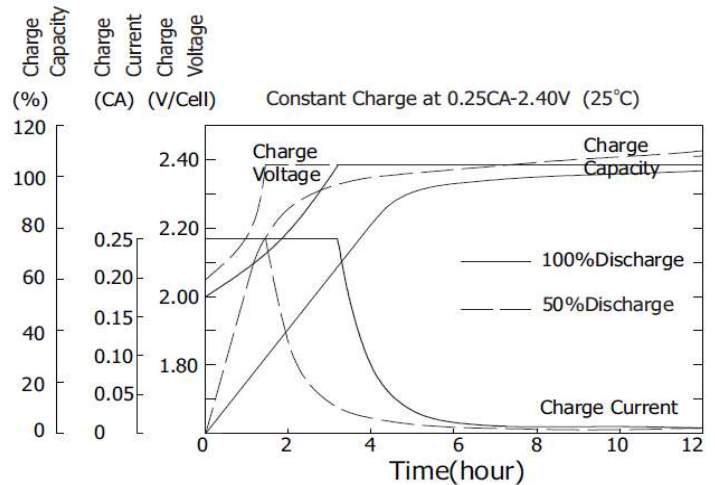
Self Discharge Characteristics



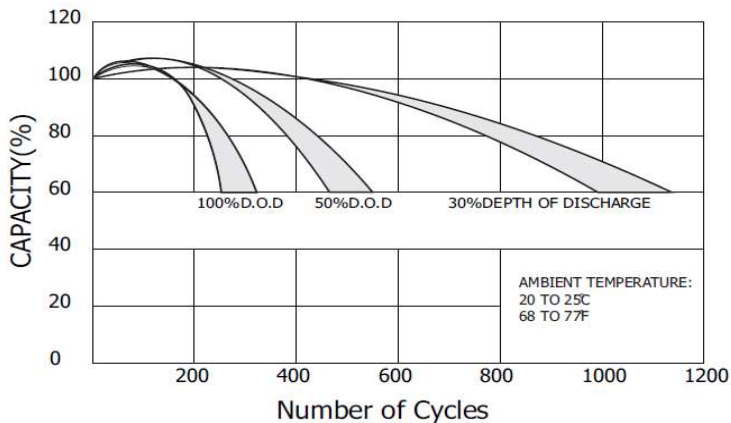
Discharge Characteristics (25°C)



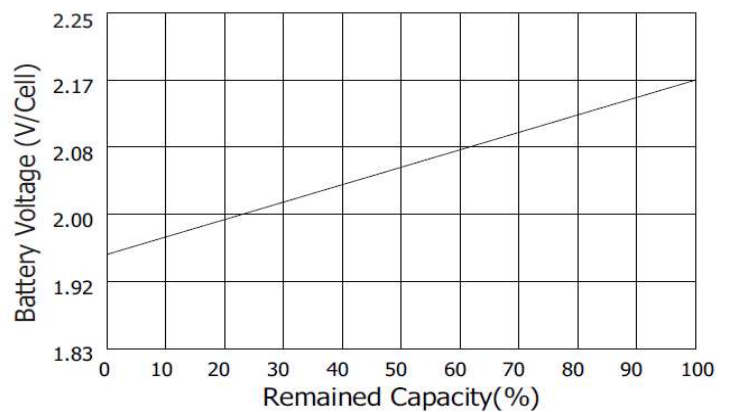
Charging Characteristics (25°C)



Cycle Service Life in Relation to Depth of Discharge



Relationship Between OCV and Residual Capacity (25°C)



SYSTEMS SUNLIGHT S.A.

Headquarters 8, Thivaidos & Sfiggos Street | 145 64 Kifissia | Greece
 Manufacturing Plant Neo Olvio | 672 00 Xanthi | Greece
 Recycling Plant Industrial Area of Komotini | 691 00 Komotini | Greece
 Southeast Europe Industrial Sales 14B Menexedon Street | 145 64 Kato Kifissia | Greece

Sunlight Batteries USA Inc. 4755 McConnell Center Drive | Greensboro | NC 27405 | USA
 Sunlight European Battery Assembly 175, Via Stra | 37030 Colognola Ai Colli Verona | Italy
 Sunlight Industrial SRL 111-115, Timisoara Boulevard | 061327 Bucharest | Romania
www.systems-sunlight.com