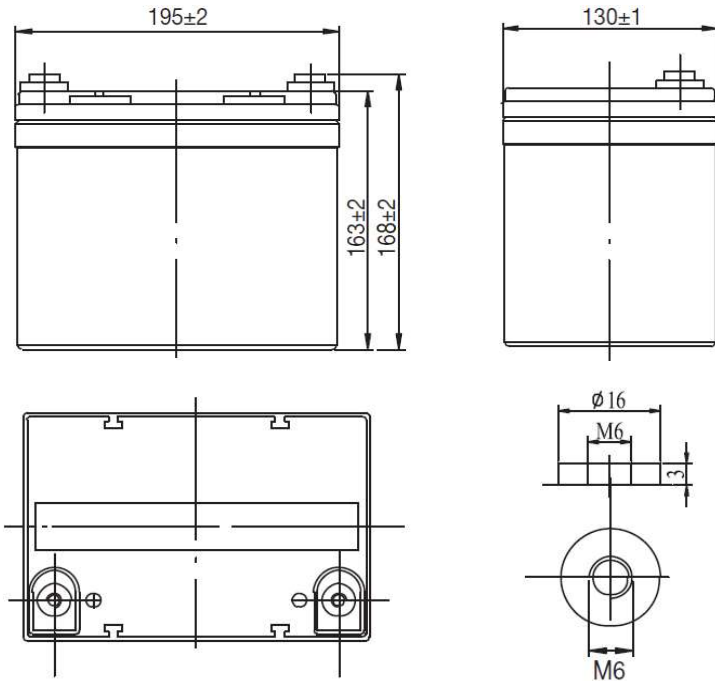


# SUNLIGHT AccuForce 12V-33Ah

AGM VRLA Battery

## Applications

- Uninterruptible Power Supplies (UPS)
- Electric Power Systems (EPS)
- Emergency backup power supplies
- Electronic apparatus and equipment
- Communication power supplies
- DC power supplies
- Auto control system



## Specifications

Nominal Voltage	12 V	
Number of cells	6	
Design Floating Life (20°C)	10 years	
Dimensions	Length	195 mm
	Width	130 mm
	Height	163 mm
	Total Height	168 mm
Weight		9.5 kg
Nominal Capacity (25°C)	20 hours rate (1.80)	35.0 Ah
	10 hours rate (1.80)	33.0 Ah
	5 hours rate (1.75)	29.0 Ah
	1 hour rate (1.65)	20.6 Ah
Internal Resistance (fully charged, 25°C)	12.5 mOhms	
Self Discharge	approx. 3% per month at 25°C	
Nominal Operating Temperature	25°C	
Operating Temperature range	Discharge	-15°C to 45°C
	Charge	0°C to 40°C
	Storage	-15°C to 40°C
Float Charging Voltage	2.27 to 2.30 V/cell at 25°C Temperature compensation -20mV/°C	
Maximum charging current	9.9 A	
Maximum discharge current (25°C)	350 A (5 sec.)	
Short Circuit Current	500 A	

## Performance Data

### Discharge Constant Current at 25°C (Amperes)

End Voltage (V/cell)	5min	10min	15min	20min	30min	45min	1h	2h	3h	4h	5h	6h	8h	10h	20h
1.60 V	122	70.7	55.6	47.1	34.3	24.8	20.9	12.3	8.59	7.04	5.98	4.67	4.08	3.50	1.81
1.65 V	118	68.6	54.2	45.9	33.9	24.4	20.6	12.2	8.54	7.00	5.88	4.64	4.06	3.47	1.81
1.70 V	113	65.6	52.2	44.2	32.0	23.5	20.0	12.1	8.48	6.95	5.82	4.61	4.03	3.42	1.81
1.75 V	109	64.4	51.2	42.7	31.2	23.3	19.7	11.9	8.42	6.91	5.80	4.58	4.00	3.36	1.79
1.80 V	103	59.7	48.8	40.4	30.1	22.3	19.4	11.6	8.16	6.69	5.64	4.43	3.88	3.30	1.75

### Discharge Constant Power at 25°C (Watts/Cell)

End Voltage (V/cell)	5min	10min	15min	20min	30min	45min	1h	2h	3h	4h	5h	6h	8h	10h	20h
1.60 V	223	128	102.0	87.0	63.5	47.4	40.0	23.8	17.0	13.9	11.9	10.20	8.09	7.00	3.68
1.65 V	215	125	101.0	84.9	62.3	46.6	39.5	23.6	16.9	13.8	11.7	10.10	8.02	6.91	3.68
1.70 V	207	119	96.8	81.7	60.4	44.8	38.5	23.4	16.8	13.7	11.5	10.10	7.93	6.84	3.68
1.75 V	198	114	93.7	78.9	58.9	44.6	37.6	23.0	16.7	13.6	11.4	10.01	7.89	6.72	3.62
1.80 V	187	110	88.1	74.7	56.8	42.6	36.6	22.4	16.2	13.2	11.1	9.69	7.66	6.61	3.49

Note: The above characteristics data can be obtained within three charge/discharge cycles.

## SYSTEMS SUNLIGHT S.A.

Headquarters 8, Thivaidos & Sfiggos Street | 145 64 Kifissia | Greece

Manufacturing Plant Neo Olvio | 672 00 Xanthi | Greece

Recycling Plant Industrial Area of Komotini | 691 00 Komotini | Greece

Southeast Europe Industrial Sales 14B Menexodon Street | 145 64 Kato Kifissia | Greece

Sunlight Batteries USA Inc. 4755 McConnell Center Drive | Greensboro | NC 27405 | USA

Sunlight European Battery Assembly 175, Via Stra | 37030 Colognola Ai Colli Verona | Italy

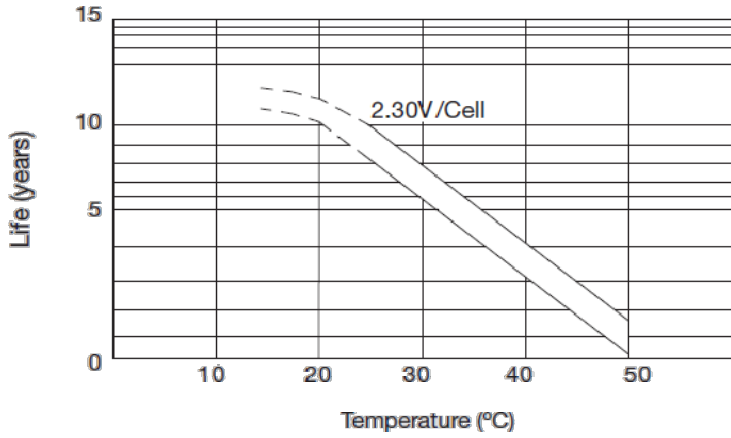
Sunlight Industrial SRL 111-115, Timisoara Boulevard | 061327 Bucharest | Romania

[www.systems-sunlight.com](http://www.systems-sunlight.com)

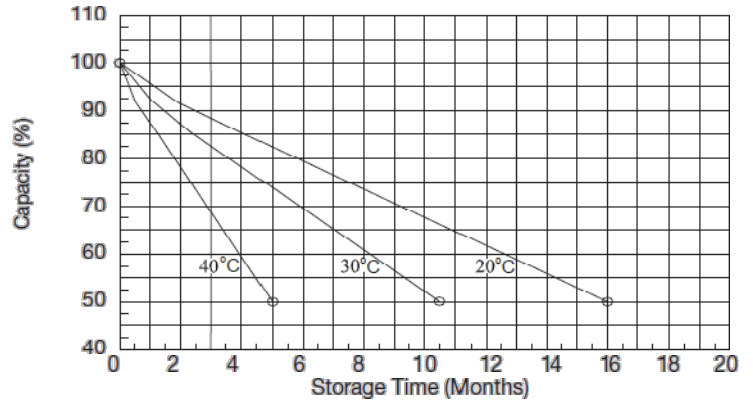
# SUNLIGHT AccuForce 12V-33Ah

AGM VRLA Battery

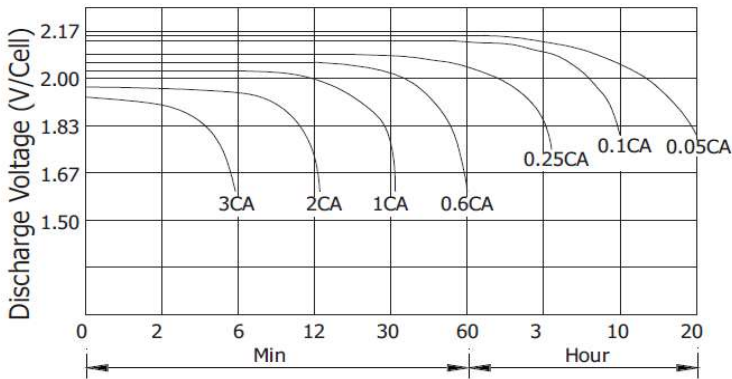
## Temperature Effects on Float Life



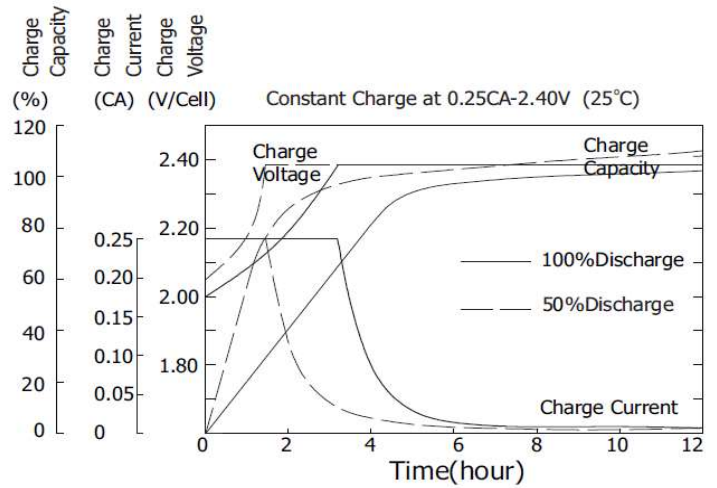
## Self Discharge Characteristics



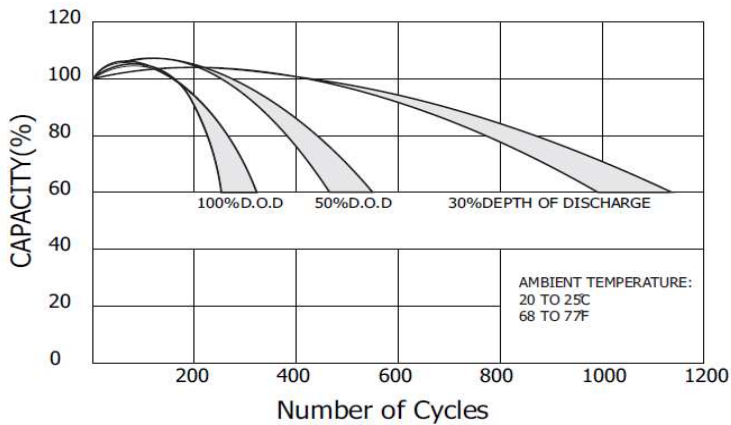
## Discharge Characteristics (25°C)



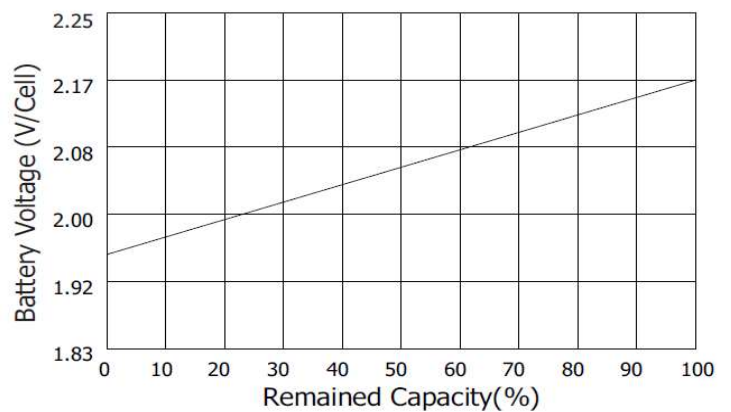
## Charging Characteristics (25°C)



## Cycle Service Life in Relation to Depth of Discharge



## Relationship Between OCV and Residual Capacity (25°C)



## SYSTEMS SUNLIGHT S.A.

Headquarters 8, Thivaidos & Sfiggos Street | 145 64 Kifissia | Greece  
 Manufacturing Plant Neo Olvio | 672 00 Xanthi | Greece  
 Recycling Plant Industrial Area of Komotini | 691 00 Komotini | Greece  
 Southeast Europe Industrial Sales 14B Menexedon Street | 145 64 Kato Kifissia | Greece

Sunlight Batteries USA Inc. 4755 McConnell Center Drive | Greensboro | NC 27405 | USA  
 Sunlight European Battery Assembly 175, Via Stra | 37030 Colognola Ai Colli Verona | Italy  
 Sunlight Industrial SRL 111-115, Timisoara Boulevard | 061327 Bucharest | Romania  
[www.systems-sunlight.com](http://www.systems-sunlight.com)