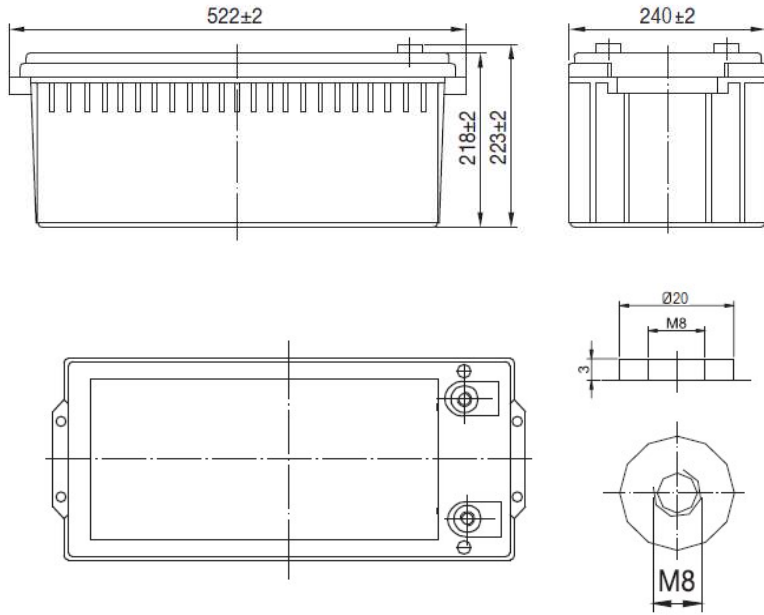


# SUNLIGHT AccuForce 12V-200Ah

AGM VRLA Battery

## Applications

- Uninterruptible Power Supplies (UPS)
- Electric Power Systems (EPS)
- Emergency backup power supplies
- Electronic apparatus and equipment
- Communication power supplies
- DC power supplies
- Auto control system



## Specifications

Nominal Voltage	12 V	
Number of cells	6	
Design Floating Life (20°C)	10 years	
Dimensions	Length	522 mm
	Width	240 mm
	Height	218 mm
	Total Height	223 mm
Weight		58.0 kg
Nominal Capacity (25°C)	20 hours rate (1.80)	212 Ah
	10 hours rate (1.80)	200 Ah
	5 hours rate (1.75)	176 Ah
	1 hour rate (1.65)	127 Ah
Internal Resistance (fully charged, 25°C)	3.5 mOhms	
Self Discharge	approx. 3% per month at 25°C	
Nominal Operating Temperature		25°C
	Discharge	-15°C to 45°C
	Charge	0°C to 40°C
Operating Temperature range		
	Storage	-15°C to 40°C
Float Charging Voltage		2.27 to 2.30 V/cell at 25°C
		Temperature compensation -18mV/°C
Maximum charging current	50 A	
Maximum discharge current (25°C)	2000 A (5 sec.)	
Short Circuit Current	3000 A	

## Performance Data

### Discharge Constant Current at 25°C (Amperes)

End Voltage (V/cell)	5min	10min	15min	20min	30min	45min	1h	2h	3h	4h	5h	6h	8h	10h	20h
1.60 V	700	408	342	289	210	154	130	75.3	52.8	43.3	35.8	32.3	25.5	21.2	11.0
1.65 V	666	395	333	279	203	148	127	73.5	52.5	43.1	35.5	31.5	25.0	20.9	10.9
1.70 V	639	379	321	265	197	144	124	72.9	52.2	42.8	35.3	30.8	24.7	20.7	10.8
1.75 V	611	362	310	257	192	139	122	71.8	51.8	41.8	35.2	30.6	24.5	20.4	10.7
1.80 V	577	343	296	244	186	134	118	70.0	50.2	41.6	34.7	29.7	23.8	20.0	10.6

### Discharge Constant Power at 25°C (Watts/Cell)

End Voltage (V/cell)	5min	10min	15min	20min	30min	45min	1h	2h	3h	4h	5h	6h	8h	10h	20h
1.60 V	1254	730	628	532	389	291	245	147	104.0	85.3	73.5	64.3	50.7	42.4	22.3
1.65 V	1213	708	613	519	381	286	241	146	103.3	84.8	73.0	63.9	50.3	42.3	22.1
1.70 V	1162	679	590	500	370	276	235	145	102.6	84.2	72.6	63.4	50.0	42.0	21.9
1.75 V	1111	650	570	486	361	273	231	142	101.9	83.5	72.1	63.0	49.6	41.4	21.7
1.80 V	1051	613	540	461	347	262	223	139	98.8	81.1	69.8	61.1	48.2	40.6	21.5

Note: The above characteristics data can be obtained within three charge/discharge cycles.

## SYSTEMS SUNLIGHT S.A.

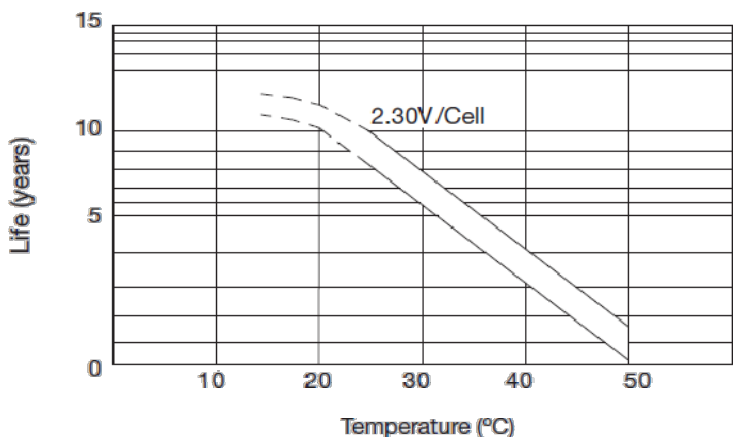
Headquarters 8, Thivaidos & Sfiggos Street | 145 64 Kifissia | Greece  
 Manufacturing Plant Neo Olvio | 672 00 Xanthi | Greece  
 Recycling Plant Industrial Area of Komotini | 691 00 Komotini | Greece  
 Southeast Europe Industrial Sales 14B Menexodon Street | 145 64 Kato Kifissia | Greece

Sunlight Batteries USA Inc. 4755 McConnell Center Drive | Greensboro | NC 27405 | USA  
 Sunlight European Battery Assembly 175, Via Stra | 37030 Colognola Ai Colli Verona | Italy  
 Sunlight Industrial SRL 111-115, Timisoara Boulevard | 061327 Bucharest | Romania  
[www.systems-sunlight.com](http://www.systems-sunlight.com)

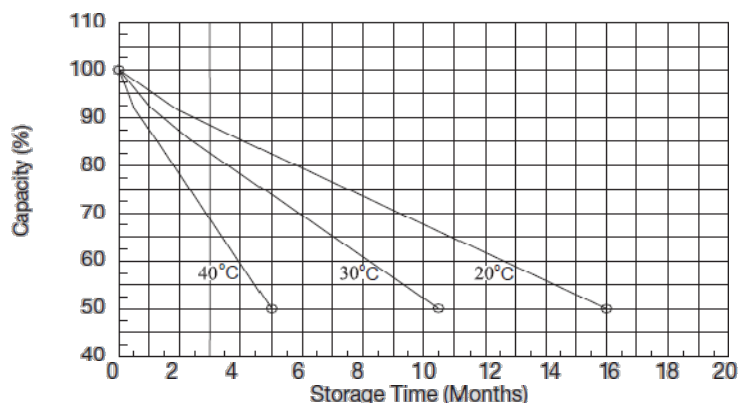
# SUNLIGHT AccuForce 12V-200Ah

AGM VRLA Battery

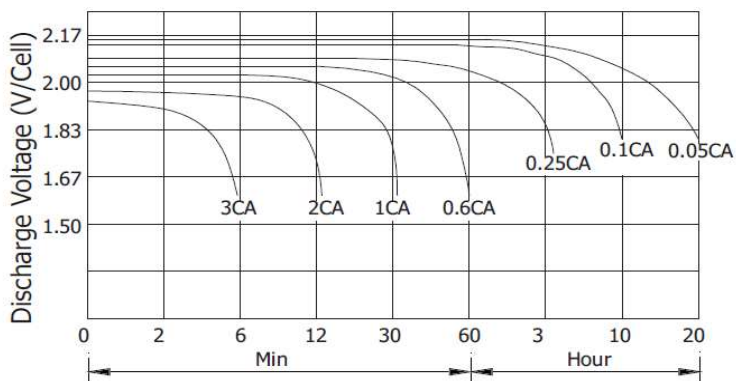
## Temperature Effects on Float Life



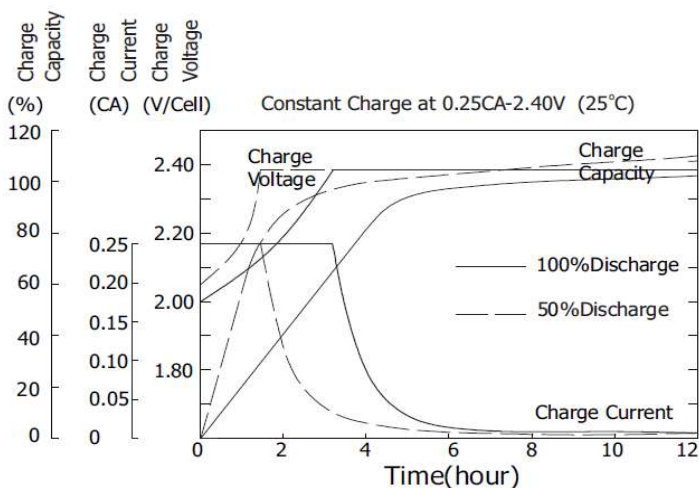
## Self Discharge Characteristics



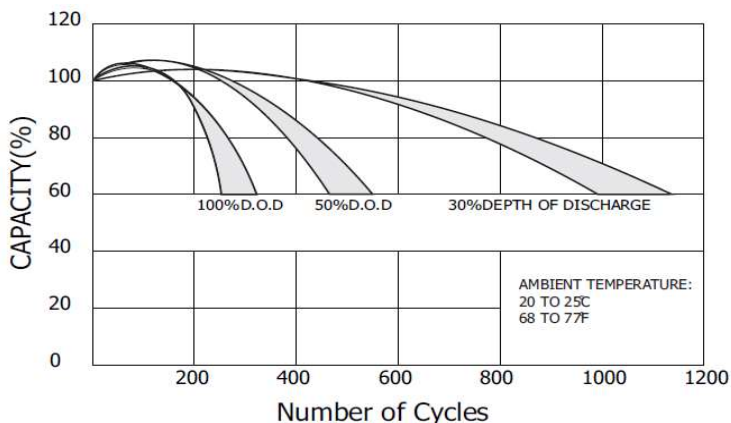
## Discharge Characteristics (25°C)



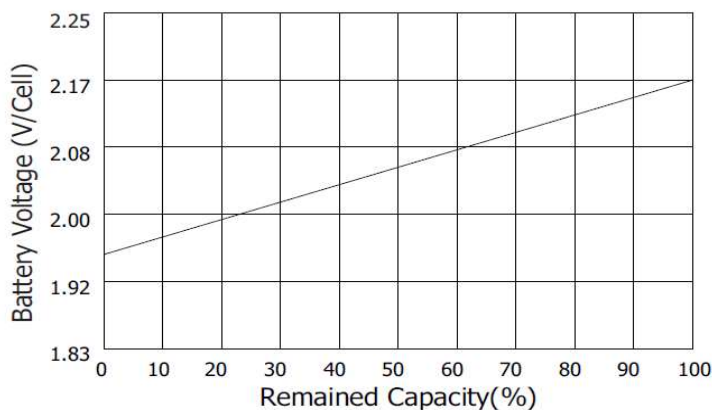
## Charging Characteristics (25°C)



## Cycle Service Life in Relation to Depth of Discharge



## Relationship Between OCV and Residual Capacity (25°C)



## SYSTEMS SUNLIGHT S.A.

Headquarters 8, Thivaídos & Sfiggos Street | 145 64 Kifissia | Greece  
 Manufacturing Plant Neo Olvio | 672 00 Xanthi | Greece  
 Recycling Plant Industrial Area of Komotini | 691 00 Komotini | Greece  
 Southeast Europe Industrial Sales 14B Menexedon Street | 145 64 Kato Kifissia | Greece

Sunlight Batteries USA Inc. 4755 McConnell Center Drive | Greensboro | NC 27405 | USA  
 Sunlight European Battery Assembly 175, Via Stra | 37030 Colognola Ai Colli Verona | Italy  
 Sunlight Industrial SRL 111-115, Timisoara Boulevard | 061327 Bucharest | Romania  
[www.systems-sunlight.com](http://www.systems-sunlight.com)