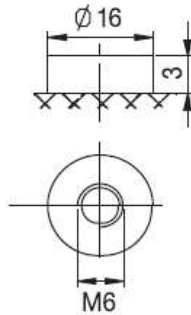
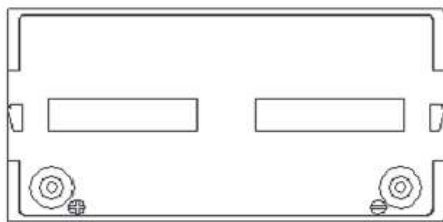
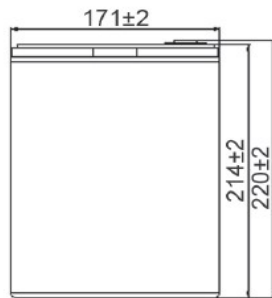
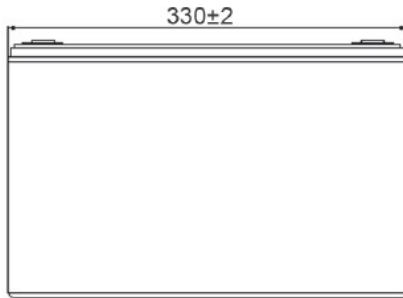


SUNLIGHT AccuForce 12V-100Ah

AGM VRLA Battery

Applications

- Uninterruptible Power Supplies (UPS)
- Electric Power Systems (EPS)
- Emergency backup power supplies
- Electronic apparatus and equipment
- Communication power supplies
- DC power supplies
- Auto control system



Specifications

Nominal Voltage	12 V	
Number of cells	6	
Design Floating Life (20°C)	10 years	
Dimensions	Length	330 mm
	Width	171 mm
	Height	214 mm
	Total Height	220 mm
Weight		28.5 kg
Nominal Capacity (25°C)	20 hours rate (1.80)	106.0 Ah
	10 hours rate (1.80)	100.0 Ah
	5 hours rate (1.75)	89.0 Ah
	1 hour rate (1.65)	62.8 Ah
Internal Resistance (fully charged, 25°C)		5 mOhms
Self Discharge		approx. 3% per month at 25°C
Nominal Operating Temperature		25°C
Operating Temperature range	Discharge	-15°C to 45°C
	Charge	0°C to 40°C
	Storage	-15°C to 40°C
Float Charging Voltage		2.27 to 2.30 V/cell at 25°C
		Temperature compensation -18mV/°C
Maximum charging current		25 A
Maximum discharge current (25°C)		1000 A (5 sec.)
Short Circuit Current		1650 A

Performance Data

Discharge Constant Current at 25°C (Amperes)

End Voltage (V/cell)	5min	10min	15min	20min	30min	45min	1h	2h	3h	4h	5h	6h	8h	10h	20h
1.60 V	351	207	166	140	105.0	76.7	63.0	37.8	26.4	21.9	18.1	14.5	12.8	10.6	5.53
1.65 V	339	201	161	137	101.9	75.5	62.8	36.8	26.3	21.8	18.0	14.4	12.7	10.5	5.51
1.70 V	324	191	155	131	98.8	72.4	62.4	36.5	26.1	21.3	17.9	14.3	12.4	10.4	5.50
1.75 V	311	184	150	127	96.4	71.4	60.6	36.0	25.9	20.8	17.8	14.2	12.2	10.2	5.49
1.80 V	294	174	143	121	92.9	68.9	58.8	35.0	25.2	20.3	17.2	13.8	12.1	10.0	5.30

Discharge Constant Power at 25°C (Watts/Cell)

End Voltage (V/cell)	5min	10min	15min	20min	30min	45min	1h	2h	3h	4h	5h	6h	8h	10h	20h
1.60 V	631	366	299	252	191	142	122	71.6	51.0	41.6	35.7	31.0	24.5	21.2	11.10
1.65 V	611	355	292	246	187	140	119	71.2	50.7	41.2	35.5	30.9	24.5	20.9	11.00
1.70 V	585	341	281	237	181	135	116	70.5	50.3	41.1	35.2	30.6	24.3	20.7	10.90
1.75 V	560	326	271	229	177	133	115	69.5	50.0	40.7	35.0	30.4	24.2	20.4	10.80
1.80 V	529	308	257	217	170	128	113	67.7	48.5	39.5	34.0	29.6	23.3	20.1	10.60

Note: The above characteristics data can be obtained within three charge/discharge cycles.

SYSTEMS SUNLIGHT S.A.

Headquarters 8, Thivaidos & Sfiggos Street | 145 64 Kifissia | Greece

Manufacturing Plant Neo Olvio | 672 00 Xanthi | Greece

Recycling Plant Industrial Area of Komotini | 691 00 Komotini | Greece

Southeast Europe Industrial Sales 14B Menexedon Street | 145 64 Kato Kifissia | Greece

Sunlight Batteries USA Inc. 4755 McConnell Center Drive | Greensboro | NC 27405 | USA

Sunlight European Battery Assembly 175, Via Stra | 37030 Colognola Ai Colli Verona | Italy

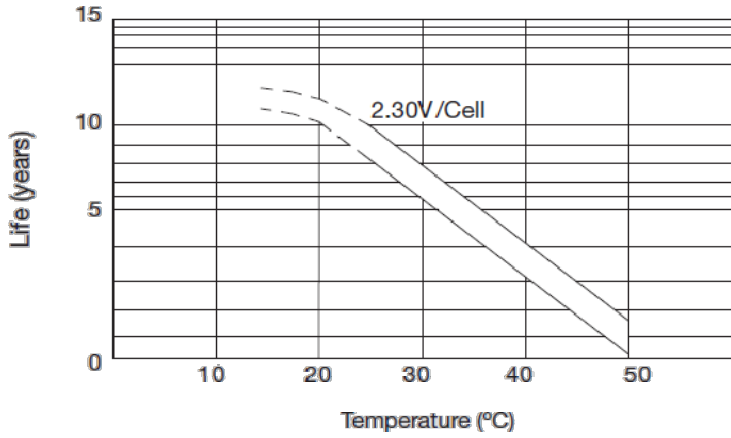
Sunlight Industrial SRL 111-115, Timisoara Boulevard | 061327 Bucharest | Romania

www.systems-sunlight.com

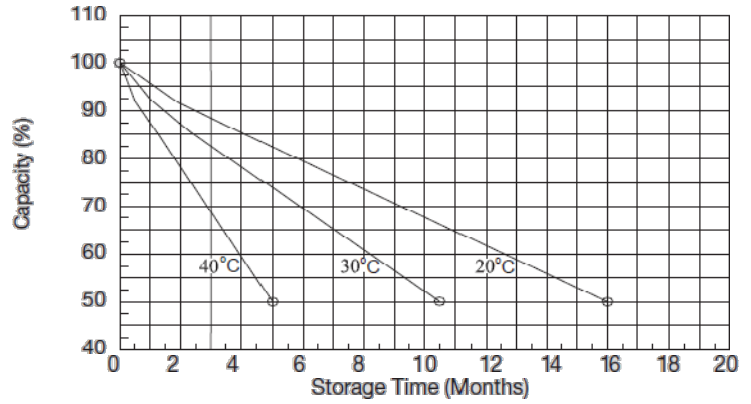
SUNLIGHT AccuForce 12V-100Ah

AGM VRLA Battery

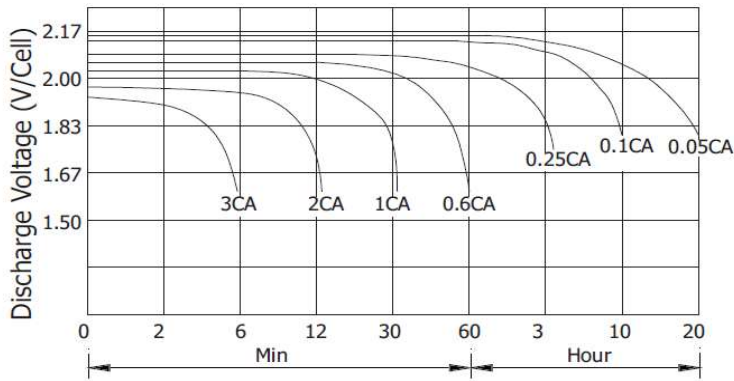
Temperature Effects on Float Life



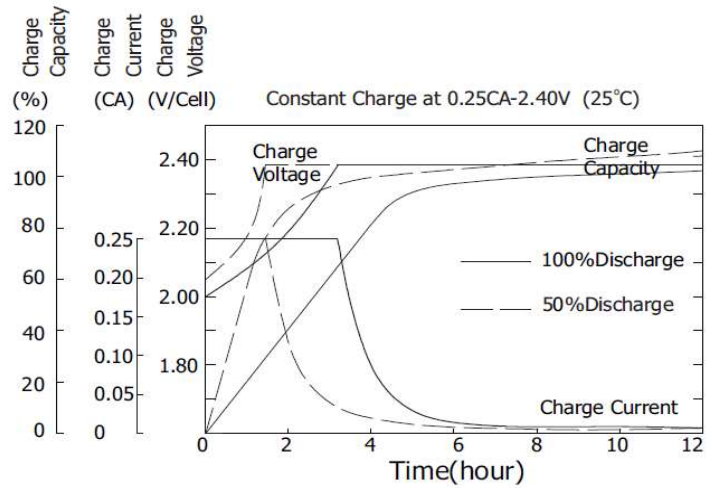
Self Discharge Characteristics



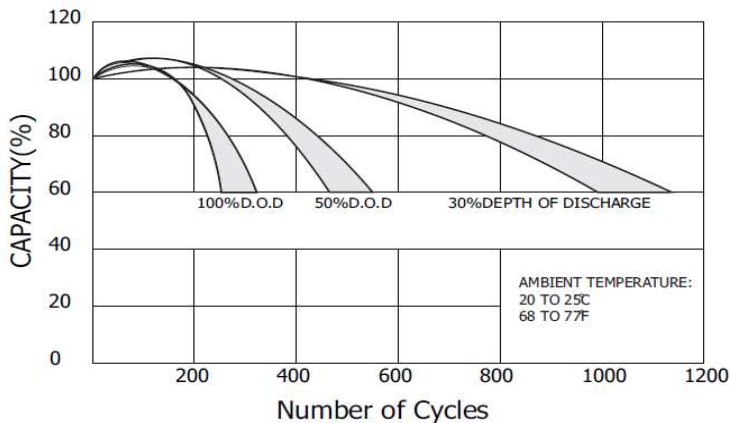
Discharge Characteristics (25°C)



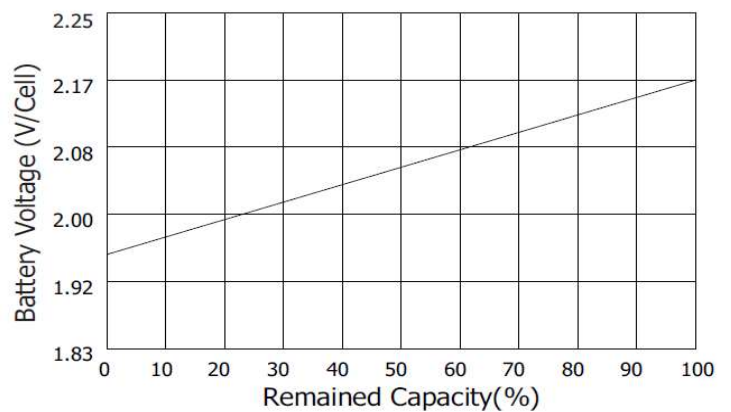
Charging Characteristics (25°C)



Cycle Service Life in Relation to Depth of Discharge



Relationship Between OCV and Residual Capacity (25°C)



SYSTEMS SUNLIGHT S.A.

Headquarters 8, Thivaidos & Sfiggos Street | 145 64 Kifissia | Greece
 Manufacturing Plant Neo Olvio | 672 00 Xanthi | Greece
 Recycling Plant Industrial Area of Komotini | 691 00 Komotini | Greece
 Southeast Europe Industrial Sales 14B Menexedon Street | 145 64 Kato Kifissia | Greece

Sunlight Batteries USA Inc. 4755 McConnell Center Drive | Greensboro | NC 27405 | USA
 Sunlight European Battery Assembly 175, Via Stra | 37030 Colognola Ai Colli Verona | Italy
 Sunlight Industrial SRL 111-115, Timisoara Boulevard | 061327 Bucharest | Romania
www.systems-sunlight.com